

# **ZHUHAI LANCELOT TECHNOLOGY CO., LTD**

**PROVIDE PROFESSIONAL DIGITAL PRINTING SOLUTIONS**

# Product Catalogues

产 品 目 录

---

01 DTF

02 ECO-Solvent

03 Sublimation

04 UV DTF

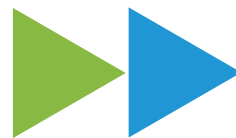
05 Consumables

06 Cup

---

# Company Profile

公 司 简 介



---

ZHUHAI LANCELOT TECHNOLOGY CO., LTD,

A comprehensive integrated strength company dedicated to the research and development, production and sales of digital printing equipment and related materials. Headquartered in Zhuhai, Guangdong, the industry has been distributed all over the world. After years development, intensive cultivation of products has created a professional technical team. With excellent service quality, we provide various personalized digital printing solutions to the world. Our main products are DTF printers, DTG printers, UV printers, eco-solvent printers, sublimation printers and corresponding consumables. The high-quality products are well-known at home and abroad. We have established a perfect supply relationship with customers in various regions. In order to support customers' work and daily use, we provide free remote service and telephone support within 24 hours and sample delivery. We are your best choice.

珠海连青电子科技有限公司，致力于数码印刷设备和相关配套材料的研发、生产和销售综合一体化实力公司。总部位于广东珠海，产业布局全球，经过多年的行业发展，产品上精耕细作，打造一支专业的技术团队。以卓越的服务品质，面向全球提供各种个性化数码打印方案。我们的主营产品是白墨烫画打印机、直喷打印机、uv平板机、弱溶剂打印机、热升华打印机、墨水、膜和其他耗材。产品质量上乘而享誉海内外。与各个区域客户建立了完善供应关系，为了支持客户的工作及日常运用，我们24小时内服务并免费供给远程服务、电话支持，提供免费寄样服务。珠海连青是您的最佳选择。

---

# Printer Series



Be A Professional And Contributing  
Global Supplier In Digital Printing  
And Musical Manufacturinc

## 30CM XP600 SINGLE DTF PRINTER

3 0 C M X P 6 0 0 单 头 机 器



## 30CM DTF L1800 PRINTER

3 0 c m L 1 8 0 0 打 印 机



### TECHNICAL PARAMETER

技 术 参 数

|   |  |
|---|--|
| Print Head<br>喷头                          | 1 XP600  |
| Print Size<br>打印尺寸                        | 30CM(Max Width)  |
| Colour<br>颜色                              | C/M/Y/BK/W   |
| Ink<br>墨水                                 | Sublimation/DTF/Ecosolvent   |
| Print Speed/Precision<br>打印速度 / 打印精度      | 6PASS 0.8mm <sup>2</sup> /H<br>360*1080 DPI  |
| Operating System<br>系统                    | Windows 10   |
| Image Format<br>图片格式                      | JPG/TIF  |
| Data input<br>数据输入                        | RJ45(1000 Megabyte)  |
| Working Environment Temperature<br>工作环境温度 | Temperature 20-25°C Relative Humidity :50%-65%<br>温度 20 - 25 °C 相对湿度 : 50 % - 65 % |
| Input Voltage/Power<br>输入电压 / 功率          | AC220,50-60HZ 300W   |
| Machine Size<br>机器尺寸                      | L80*W38*H35CM  |
| Packing Size<br>包装尺寸                      | L96*W45* H47CM   |

### TECHNICAL PARAMETER

技 术 参 数

|   |  |
|---|--|
| Print head<br>喷头                          | L1800  |
| Print Size<br>打印尺寸                        | 30CM(Max Width)  |
| Colour<br>颜色                              | C/M/Y/BK/W   |
| Ink<br>墨水                                 | DTF INK  |
| Print Speed/Precision<br>打印速度 / 打印精度      | 0.4~1(m <sup>2</sup> /h)   |
| Operating System<br>系统                    | Windows 10   |
| Image Format<br>图片格式                      | JPG/TIF  |
| Data Input<br>数据输入                        | RJ45(1000Megabyte)   |
| Working Environment Temperature<br>工作环境温度 | Temperature 20-25°C Relative Humidity :50%-65%<br>温度 20 - 25 °C 相对湿度 : 50 % - 65 % |
| Input Voltage/Power<br>输入电压 / 功率          | AC220V,50-60HZ 35W   |
| Machine Size<br>机器尺寸                      | L70.5*W32.2*H21.5CM 30KG   |
| Packing Size<br>包装尺寸                      | L79*W48* H36CM 40KG  |

# LANCELOT BRAND 60CM DTF PRINTER

6 0 c m 柯 式 烫 画 打 印 机



①



②



③



④



⑤

## TECHNICAL PARAMETER

技 术 参 数

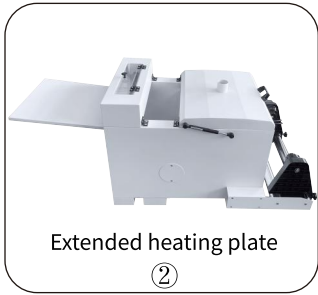
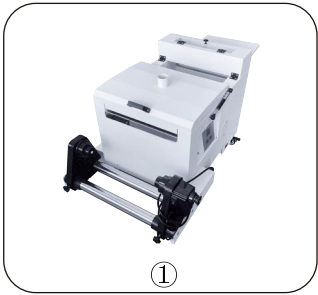
|                             |   |  |  |  |   |
|-----------------------------|---|--|--|--|---|
| Print Head<br>喷头            | 2 I 3 2 0 0   | 4 I 3 2 0 0  | 2 X P 6 0 0  | 2 I 1 6 0 0  | 4 I 1 6 0 0   |
| Speed<br>速度                 | 6PASS 10m <sup>2</sup> /H<br>8PASS 8m <sup>2</sup> /H | 6PASS 18m <sup>2</sup> /H<br>8PASS 14m <sup>2</sup> /H | 6PASS 3.5m <sup>2</sup> /H<br>8PASS 2.5m <sup>2</sup> /H   | 6PASS 7.5m <sup>2</sup> /H<br>8PASS 6.5m <sup>2</sup> /H | 6PASS 11m <sup>2</sup> /H<br>8PASS 8.5m <sup>2</sup> /H |
| Precision<br>精度             | 720*1800 DPI<br>720*2400 DPI                          | 720*1800 DPI<br>720*2400 DPI                           | 360*1080 DPI<br>360*1440 DPI<br>720*540 DPI<br>720*720 DPI | 720*900 DPI<br>720*1200 DPI                              | 720*900 DPI<br>720*1200 DPI                             |
| Recommended Shaker<br>推荐抖粉机 | ② ③ ⑤   | ① ④  | ② ⑤  | ② ③ ⑤  | ③ ④   |

|   |  |
|---|--|
| Print Size<br>打印尺寸                        | 60CM(Max Width)  |
| Colour<br>颜色                              | C/M/Y/BK/W/Fluorescence  |
| Ink<br>墨水                                 | Pigment Ink<br>颜料墨水  |
| Operating System<br>系统                    | Windows 10   |
| Image Format<br>图片格式                      | JPG/TIF  |
| Data Input<br>数据输入                        | RJ45(1000Megabyte)   |
| Working Environment Temperature<br>工作环境温度 | Temperature 20-25°C Relative Humidity :50%-65%<br>温度 20 - 25 °C 相对湿度 : 50 % - 65 % |
| Input Voltage/Power<br>输入电压 / 功率          | AC220v,50-60HZ 800W  |
| Machine Size/Weight<br>机器尺寸 / 重量          | L172*W86*H158CM 160KG  |
| Packing Size/Weight<br>包装尺寸 / 重量          | L182*W82*H72CM 180KG   |

DTF Printer

# LANCELOT BRAND 30CM DTF PRINTER

L a n c e l o t   品 牌 3 0 c m   D T F   打 印 机



Extended heating plate

| TECHNICAL PARAMETER                            |   |  |  |
|--|---|--|--|
| 技 术 参 数  |   |  |  |
| Print Head<br>喷 头                              | 2 I 3 2 0 0   | 2 X P 6 0 0  | 2 I 1 6 0 0  |
| Speed<br>速 度                                   | 6PASS 10m <sup>2</sup> /H<br>8PASS 8m <sup>2</sup> /H   | 6PASS 3.5m <sup>2</sup> /H<br>8PASS 2.5m <sup>2</sup> /H   | 6PASS 5.5m <sup>2</sup> /H<br>8PASS 4.5m <sup>2</sup> /H |
| Precision<br>精 度                               | 720*1800 DPI<br>720*2400 DPI  | 360*1080 DPI<br>360*1440 DPI<br>720*540 DPI<br>720*720 DPI | 720*1200DPI<br>720*1800 DPI                              |
| Recommended Shaker<br>推 荐 抖 粉 机                | ②   | ①  | ②  |
| Print Size<br>打 印 尺 寸                          | 30CM(Max Width)   |  |  |
| Colour<br>颜 色                                  | C/M/Y/BK/W/Fluorescence   |  |  |
| Ink<br>墨 水                                     | Pigment Ink<br>颜 料 墨 水  |  |  |
| Operating System<br>系 统                        | Windows 10  |  |  |
| Image Format<br>图 片 格 式                        | JPG/TIF   |  |  |
| Data Input<br>数 据 输 入                          | RJ45(1000Megabyte)  |  |  |
| Working Environment Temperature<br>工 作 环 境 温 度 | Temperature 20-25°C Relative Humidity :50%-65%<br>温 度 2 0 - 2 5 ° C   相 对 湿 度 : 5 0 % - 6 5 % |  |  |
| Lnput voltage/Power<br>输 入 电 压 / 功 率           | AC220V,50-60HZ 500w   |  |  |
| Machine Size/Weight<br>机 器 尺 寸 / 重 量           | L104*W65*H65CM 80KG   |  |  |
| Packing Size/Weight<br>包 装 尺 寸 / 重 量           | L117*W62*H74CM 100KG  |  |  |

# ALL IN ONE PRINER (SHAKER MACHINE WITH CONVEYOR BELT)

导带一体机



**33cm** All in one priner  
(shaker machine with conveyor belt)

3 3 c m 导带一体机



**60cm** All in one priner  
(shaker machine with conveyor belt)

6 0 c m 导带一体机

## TECHNICAL PARAMETER

技术参数

|                  |   |  |
|------------------|---|--|
| Print Head<br>喷头 | 2 I 3 2 0 0   | 2 I 1 6 0 0  |
| Speed<br>速度      | 6PASS 10m <sup>2</sup> /H<br>8PASS 8m <sup>2</sup> /H | 6PASS 5.5m <sup>2</sup> /H<br>8PASS 4.5m <sup>2</sup> /H |
| Precision<br>精度  | 720*1800 DPI<br>720*2400 DPI                          | 720*900 DPI<br>720*1200 DPI                              |

|   |  |
|---|--|
| Print Size<br>打印尺寸                        | 33CM(Max Width)  |
| Colour<br>颜色                              | C/M/Y/BK/W   |
| Ink<br>墨水                                 | DTF Ink  |
| Operating System<br>系统                    | Windows 10   |
| Image Format<br>图片格式                      | JPG/TIF  |
| Data Input<br>数据输入                        | RJ45(1000Megabyte)   |
| Working Environment Temperature<br>工作环境温度 | Temperature 20-25°C Relative Humidity :50%-65%<br>温度 20-25 °C 相对湿度 : 50 % - 65 % |
| Input Voltage/Power<br>输入电压 / 功率          | AC 220V,50-60HZ 600W   |
| Machine Size/Weight<br>机器尺寸 / 重量          | L195*W112*H126CM 300KG   |
| Packing Size/Weight<br>包装尺寸 / 重量          | L215*W120*H130CM 350KG   |

## TECHNICAL PARAMETER

技术参数

|                  |   |  |
|------------------|---|--|
| Print Head<br>喷头 | 2 I 3 2 0 0   | 2 I 1 6 0 0  |
| Speed<br>速度      | 6PASS 10m <sup>2</sup> /H<br>8PASS 8m <sup>2</sup> /H | 6PASS 7.5m <sup>2</sup> /H<br>8PASS 6.5m <sup>2</sup> /H |
| Precision<br>精度  | 720*1800 DPI<br>720*2400 DPI                          | 720*900 DPI<br>720*1200 DPI                              |

|   |  |
|---|--|
| Print Size<br>打印尺寸                        | 60CM(Max Width)  |
| Colour<br>颜色                              | C/M/Y/BK/W   |
| Ink<br>墨水                                 | DTF Ink  |
| Operating System<br>系统                    | Windows 10   |
| Image Format<br>图片格式                      | JPG/TIF  |
| Data Input<br>数据输入                        | RJ45(1000Megabyte)   |
| Working Environment Temperature<br>工作环境温度 | Temperature 20-25°C Relative Humidity :50%-65%<br>温度 20-25 °C 相对湿度 : 50 % - 65 % |
| Input Voltage/Power<br>输入电压 / 功率          | AC 220V,50-60HZ 600W   |
| Printer Size/Weight<br>打印机尺寸 / 重量         | L1450*W650*H750MM/250KG  |
| Shaker Size/Weight<br>抖粉机尺寸 / 重量          | L1900*W1450*H1250MM/350KG  |



# ECO-SOLVENT PRINTER

弱 溶 剂 机 器



## TECHNICAL PARAMETER

技 术 参 数

|   |               |   |
|---|---------------|---|
| Print Head<br>喷 头                         |               | I1600E1/XP600/I3200E1   |
| Number Of Printhead<br>喷 头 数 量            |               | 1PCS/2PCS   |
| Print Resolution/Speed<br>打 印 分 辨 率 / 速 度 |               | 1PCS: 4 PASS 14(m <sup>2</sup> /h)<br>6 PASS 10(m <sup>2</sup> /h)<br>8 PASS 7(m <sup>2</sup> /h)   2PCS: 4 PASS 25(m <sup>2</sup> /h)<br>6 PASS 15(m <sup>2</sup> /h)<br>8PASS 10(m <sup>2</sup> /h) |
| Media<br>媒 体                              | Colour<br>颜 色 | CMYK 4 Color/CMYK LM LC 6 Color   |
|   | INK<br>墨 水    | Eco-Solvent Ink   |
|   | Width<br>宽 度  | 60CM/1.2M/1.6M/1.8M/2.5M/3.2M   |
| Water-Based<br>水 溶 性                      |               | PP/Backlit Film/Photo Paper/Movable Self-Adhesive<br>P P / 背 光 膜 / 相 纸 / 可 移 动 不 干 胶  |
| ECO-Solvent<br>弱 溶 剂                      |               | Self-Adhesive Vinyl/Flex/One Way vision/Coated Banner<br>自 粘 乙 烯 / 柔 性 / 单 向 透 视 / 涂 层 条 幅  |
| Medium Transmission<br>介 质 传 输            |               | Auto Media Take-up System<br>自 动 介 质 取 出 系 统  |
| Rip Software<br>R I P 软 件                 |               | Maintop<br>蒙 泰  |
| Input Voltage/Power<br>输 入 电 压 / 功 率      |               | AC 220V,50-60HZ 600W  |
| Machine Size/Weight<br>机 器 尺 寸 / 重 量      |               | L272*W73*H63CM 180KG  |
| Packing Size/Weight<br>包 装 尺 寸 / 重 量      |               | L282*W78*H126CM 200KG   |

# SUBLIMATION PRINTER

热 升 华 机 器



## TECHNICAL PARAMETER

技 术 参 数

|   |               |   |
|---|---------------|---|
| Print Head<br>喷 头                         |               | I1600A1/XP600/I3200A1   |
| Number Of Printhead<br>喷 头 数 量            |               | 1PCS/2PCS/4PCS  |
| Print Resolution/Speed<br>打 印 分 辨 率 / 速 度 |               | 1PCS: 4 PASS 14(m <sup>2</sup> /h)   2PCS: 4 PASS 25(m <sup>2</sup> /h)<br>6 PASS 10(m <sup>2</sup> /h)   6 PASS 15(m <sup>2</sup> /h)<br>8 PASS 7(m <sup>2</sup> /h)   8PASS 10(m <sup>2</sup> /h) |
| Media<br>媒 体                              | Colour<br>颜 色 | CMYK 4 Color/CMYK LM LC 6 Color   |
|   | INK<br>墨 水    | Sublimation Ink   |
|   | Width<br>宽 度  | 60CM/1.2M/1.6M/1.8M/2.5M/3.2M   |
| Sublimation<br>热 升 华                      |               | Sublimation Paper<br>升 华 纸  |
| Medium Transmission<br>介 质 传 输            |               | Auto Media Take-Up System<br>自 动 介 质 取 出 系 统  |
| Rip Software<br>R I P 软 件                 |               | Maintop<br>蒙 泰  |
| Input Voltage/Power<br>输 入 电 压 / 功 率      |               | AC 220V,50-60HZ 600W  |
| Machine Size/Weight<br>机 器 尺 寸 / 重 量      |               | L272*W73*H63CM 180KG  |
| Packing Size/Weight<br>包 装 尺 寸 / 重 量      |               | L282*W78*H126CM 200KG   |

## 30CM/A2 UV DTF PRINTER

30cm / A2 水晶标机器



## 60CM UV DTF PRINTER

60cm 水晶标机器



### TECHNICAL PARAMETER

技术参数

|   |  |
|---|--|
| Print Head<br>喷头                          | I3200u1/XP600/I1600u1  |
| Print Size<br>打印尺寸                        | 30CM(Max Width)  |
| Colour<br>颜色                              | CMYK+LC+LM+V+W   |
| INK<br>墨水                                 | UV DTF Ink   |
| Print Speed<br>打印速度                       | 720*720dpi 8 PASS 2-3(m <sup>2</sup> /h)   |
| Operating System<br>系统                    | Windows 10   |
| Picture Format<br>图片格式                    | JPG/TIF  |
| Data Inputs<br>数据输入                       | RJ45(1000Megabyte)   |
| Working Environment Temperature<br>工作环境温度 | Temperature 20-25°C Relative Humidity :50%-65%<br>温度 20 - 25 °C 相对湿度 : 50 % - 65 % |
| Input Voltage/Power<br>输入电压 / 功率          | Power: 1000W Voltage: 220V Current: 4.5A   |
| Machine Size/Weight<br>机器尺寸 / 重量          | L118*W80*H100CM 180kg  |
| Packing Size/Weight<br>包装尺寸 / 重量          | L130*W79*H110CM 250kg  |

### TECHNICAL PARAMETER

技术参数

|   |  |
|---|--|
| Print Head<br>喷头                          | I3200u1/XP600/I1600u1  |
| Print Size<br>打印尺寸                        | 60CM(Max Width)  |
| Colour<br>颜色                              | CMYK+W+V   |
| INK<br>墨水                                 | UV DTF Ink   |
| Print Speed<br>打印速度                       | 6pass 8m <sup>2</sup> /H 8pass 6m <sup>2</sup> /H                                  |
| Operating System<br>系统                    | windows 10   |
| Picture Format<br>图片格式                    | JPG/TIF  |
| Data Inputs<br>数据输入                       | RJ45(1000megabyte)   |
| Working Environment Temperature<br>工作环境温度 | Temperature 20-25°C Relative Humidity :50%-65%<br>温度 20 - 25 °C 相对湿度 : 50 % - 65 % |
| Input Voltage/Power<br>输入电压 / 功率          | Power: 1000W Voltage: 220V Current: 4.5A   |
| Machine Size/Weight<br>机器尺寸 / 重量          | L176*W75*H125CM 350KG  |
| Packing Size/Weight<br>包装尺寸 / 重量          | L180*W80*H130CM 450KG  |

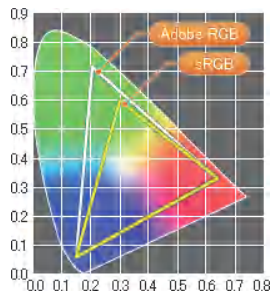
# Consumables Series

Both Supplier And Customer  
Are All Our God



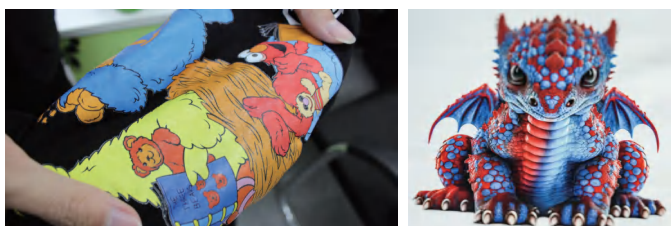
## 色域 HIGH INTENSE COLORS WITH WIDE COLOR GAMUT

INKTEC墨水为了能更加客观地反映色感和色域采用国际普遍遵循的CIE L\*a\*b\*值测量标准。测量数值是既定色相值、如果数值和正品墨水测得数据相仿、意味着色彩表现也相仿。Color gamut is a fixed range of color and tone that all our output devices. For objective and accurate measurement, InkTec measures the color quality and presentation using L\*a\*b\* values of CIE,the international standard and most widely used. If the measured values are almost the same as that of OEMs,it means that the color presentation is equivalent to that of OEMs.



## 优秀的耐光性 SUPERIOR LIGHTFASTNESS

INKTEC墨水指有优秀的耐光性、在日光下褪色少。测量数值一贯、那表明耐光性优秀 This test evaluates the resistance of printed output against sunlight exposure. If Eab values show similar measurement when Eab values of original print is compared to that of in one year.it means that the colors would be faded less by sunlight.



## 优秀的连续打印性 SUITABILITY OF CONTINUOUS PRINTING

INKTEC墨水是最稳定的连续供墨系统墨水、在大量打印时也能拥有出色的联系打印能力。Continuous inks supply system (CISS) is the equip-ment that is able to supply the inks continuously to the cartridge from exterior tanks. Stable inks stream during the long term printing work are very important features that determine the quality of the inks.InkTec inks are specially formulated to suit a continu-ous inks supply system(CISS) and provide excellent printing quality.



## PRODUCT SHOWCASE

产 品 展 示





## DTF PET FILM

DTF 烫画 PET膜



30cm PET Film



45cm PET Film



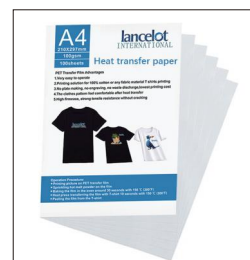
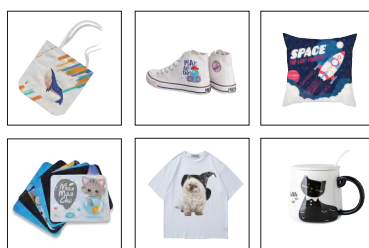
60cm PET Film

## HEAT TRANSFER PAPER

热 转 印 纸



Roll  
卷 装



Sheet  
片 装

## AB FILM

A B 膜



AB Film  
A B 膜



## HEAT MELT ADHESIVE POWDER

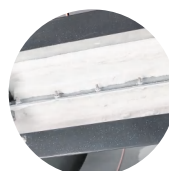
热 熔 胶 粉



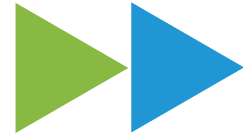
white powder  
白 粉



black powder  
黑 粉



# Lancelot Partner Factory Instruction



Floral paper cup



Heart Handle Colour Change Mug



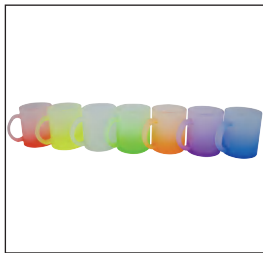
Couple Colour Changing Mug



Internal colour changing cup



Colourful Pearl Cups



Gradient Glasses



Golden Onion Cup



fluorescent cup



Electroplating spray colour cup



Coffee Mug Set of 3

Lancelot Partner Factory Is Located In Zibo City, Shandong Province, which has beautiful scenery and strong humanistic atmosphere. It is a production and sales enterprise integrating design, research and development, production, processing, warehousing and sales. Since its establishment, the company has been widely praised among domestic and foreign consumers for its high-quality products, good reputation, and high-quality services. The factory has obtained BSCI, ISO9001 system certification, and the products have passed the quality inspection of SGS, FDA and Inertek.

# lancelot INTERNATIONAL

---

ZHUHAI LANCELOT TECHNOLOGY CO., LTD

珠 海 连 青 电 子 科 技 有 限 公 司



<http://www.lancelotink.com>



No. 6,4th Floor Building A4,Xinqing 6th Industrial  
Park,No. 6 Road, Doumen District, Zhuhai City

广东省珠海市斗门区新青6路爱美科技园A4栋4楼